

A Down East Adventure in Vipers

If you are among that cadre of Viper sailors who like to venture to beautiful parts of the world to race sail boats, and you are not averse to throwing in a couple of tablespoons of adventure on top, then the Viper trip to Maine this summer might interest you.



A handful of Vipers plan to head up to race in the Boothbay Harbor Yacht Club Regatta on July 23rd -24th and then spend 2 days sailing across Muscongus Sound from Boothbay to Port Clyde.

The Boothbay Harbor Yacht club Regatta combines one design racing... (for J80s, Viper 640s, the Boothbay Harbor One Designs, J22s and Rhodes 19s)...with the Shipyard Classic Yachts Regatta open to vintage and classic yachts. There will be some great one design racing surrounded by some of the most spectacular vintage racing yachts on the eastern Seaboard.





Marylee : a Herreshoff One Design 40 foot class sloop built in 1926 is registered for the event.



So is the Viper 640, a 21 foot one design sloop designed 70 years later.

Part I - Boothbay Harbor YC Regatta

The Vipers have a one design start in the Regatta. We have asked for a mix of windward leeward courses with at least one scenic race as well. There are 2 days of racing, preceded on Sunday with a parade of sail.

Logistics:

Most of us will launch from the ramp, 0.6 mile from the yacht club on Landing Road. It is a short sail down Townsend Gut to 7 moorings which Nate Bowditch has secured for the Viper fleet off McKown Point. If anyone needs a crane, Bristol Marine in Boothbay can launch on Friday and pull the boat on Sunday. We will set out from the moorings (which are closer to the course than the club) after the skippers meeting. Anyone who wants to launch on Saturday morning can sail straight from the ramp to the racecourse.

There are simple but very comfortable rooms available at the Beach Cove Waterfront Inn which is 0.5 mile from the club and 1.1 mile from the boat ramp. Alternatively, those looking for the full Maine experience, one lucky early registrant team gets the option of camping on the wrap around porch and living room of Bob and Nate Bowditch's waterfront cottage.

We will be using Bob and Nate's dock and power boat to get to our boats on the moorings. So, 129 McKown Point Road will be Viper central for the regatta. I have circled this in red on the map.

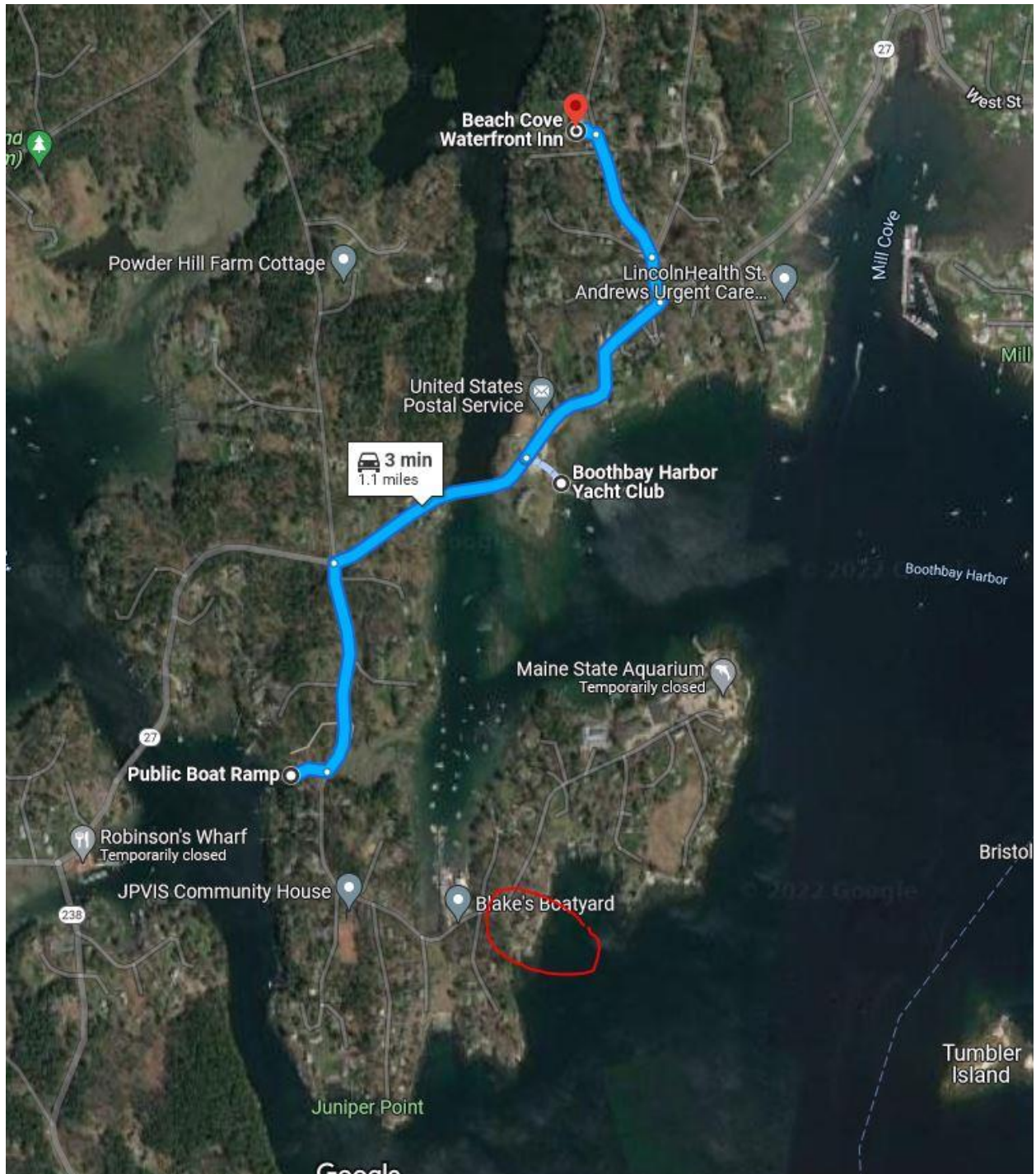
After the first 7 boats sign up with Nate, the club will also provide moorings and launch service for a small fee. Nate has arranged trailer storage for the duration of the event.

The skippers meeting is at 9.30 am on Saturday and the first start is 11.30 am.

Regatta information, NOR and Registration can all be found [here](#).

Boothbay is a stunningly beautiful place to sail and visit.





Part II - The Down East Cruise and Scorch

The Boothbay Regatta awards ceremony is at 4.30 pm on Sunday evening. Some will drive home and/or drop their boats off at Marblehead for Marblehead race Week the following weekend.

A smaller group is planning to sail across to Port Clyde and pull our boats out at a ramp in PC. The precise schedule will be weather dependent. However, the prevailing breeze across Muscongus Bay in July is a South Westerly which would mean a downwind reach for most of the way.

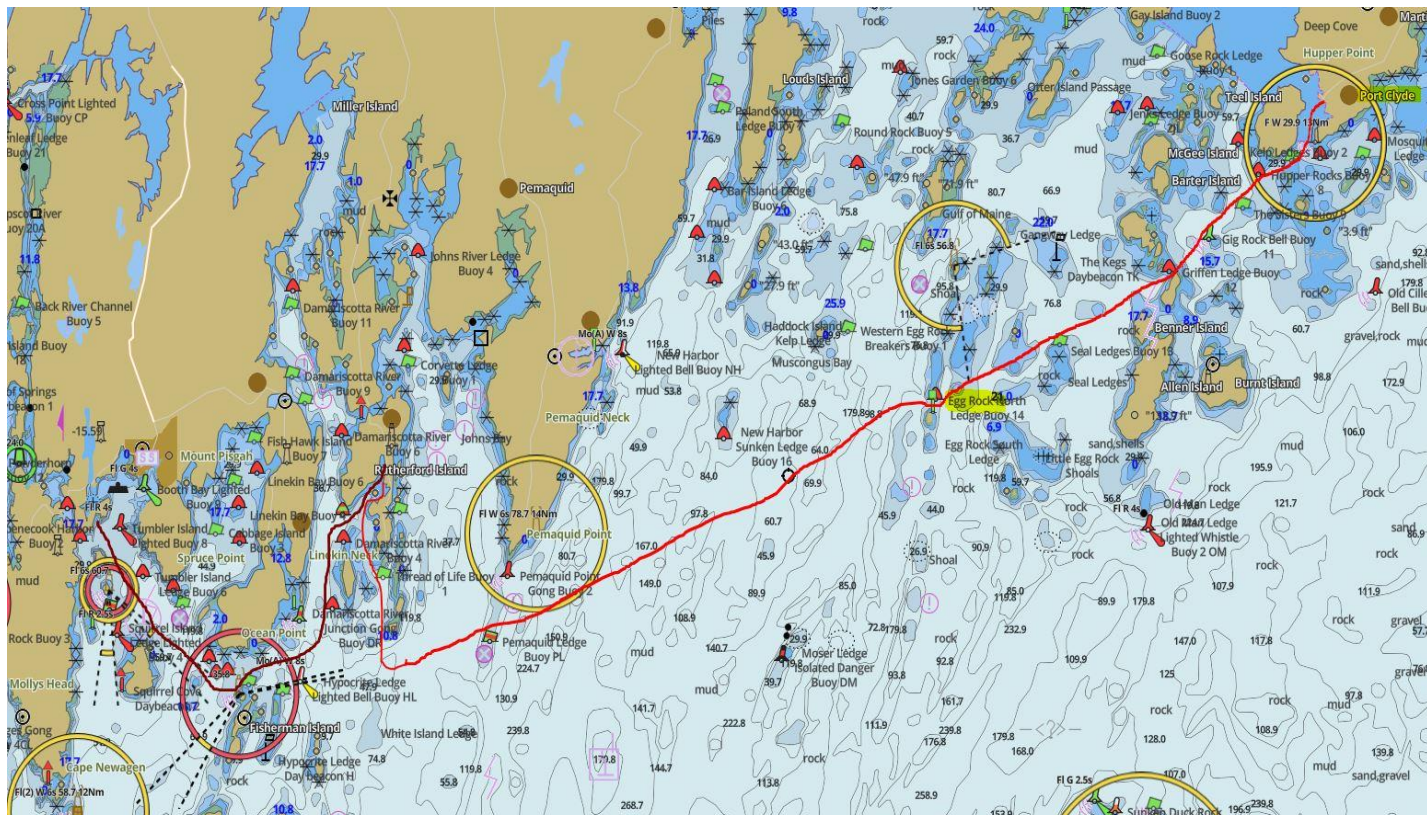
Our Current plan is:

Monday Morning Early: One person per team takes a vehicle and trailer to storage that we have arranged in St George close to Port Clyde. We have a ride arranged back to Boothbay.

Monday is a leisurely sail to Christmas Cove or thereabouts for a late lunch at the Coveside. In the afternoon, some will hang out in Christmas Cove and some will go for a power boat trip up the Damariscotta river to Seal Bay. We will stay either at the Christmas Cove Inn or if numbers warrant book a house on Rutherford island, or head across the river to East Boothbay.

Tuesday will be the Down East Scorch, a 17 nautical mile reach across Muscongus Bay from Christmas Cove to Port Clyde through some of the best scenery in Maine. The Scorch will pause at East Egg Rock for a safety check in and to watch the puffins.

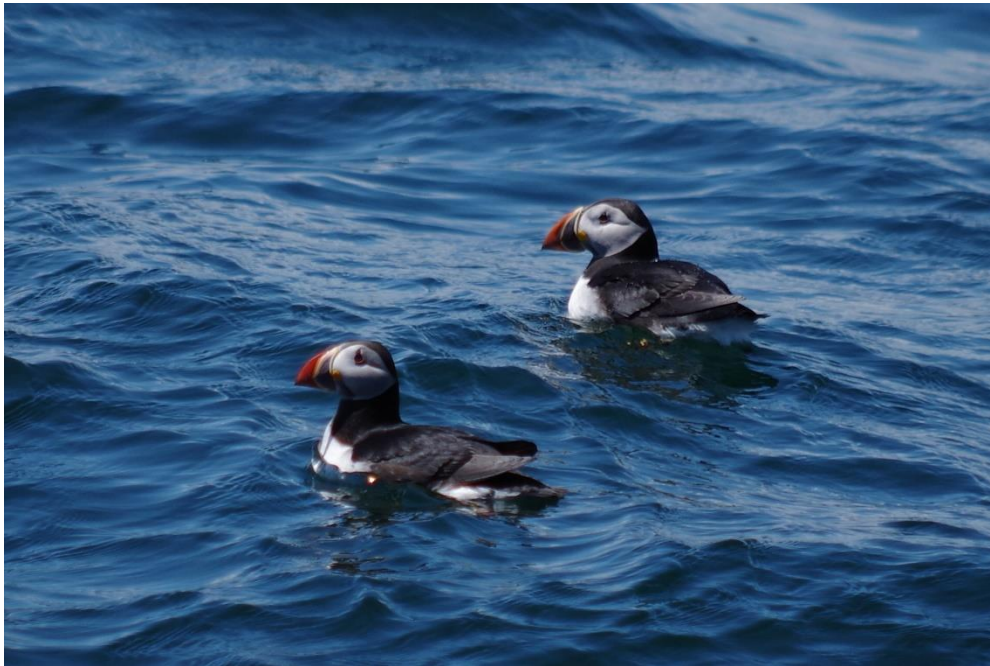
At Port Clyde we will be picked up, then get our cars, pull out and derig.



Leaving plenty of time for those who wish to catch Marblehead Race Week the following weekend.



Christmas Cove – Departure Point for the Down East Scorch on Tuesday. Turn left at Thrumcap Island and hoist!



The largest colony of Puffins in the USA is on Eastern Egg Rock, directly on the course of the Down East Scorch



Boothbay Harbor One Designs at the Boothbay Regatta



Deserted Beach on Muscongus Bay



Port Clyde – The End point of the Down East Scorch



Port Clyde's General Store (and only store)

If anyone wants to join us for some or all of the Boothbay Regatta and the Viper Down East Cruise, please reach out to either:

Nate Bowditch nubowditch@gmail.com Phone: (516) 857 4046

Justin Scott justinscott@optimum.net Phone (781) 888 6336

It is easier for us to secure moorings and arrange accommodation if we hear back from interested teams sooner rather than later.

PART I BOOTHBAY HARBOR REGATTA



● Mouse Island ● Ramp Launch in Townsend Gut ● Moorings off McKown Point ● BHYC → Race Course



Boothbay Harbor YC

Friday July 22

Registration/Check in	1600-1900
Owners/Skippers cocktails/dinner	1730-2000

Saturday July 23

Registration/Check in and Breakfast Snacks	0800-0930
Skippers' Meeting	0930
First Warning	1130
Post-Race Reception	1730-1930

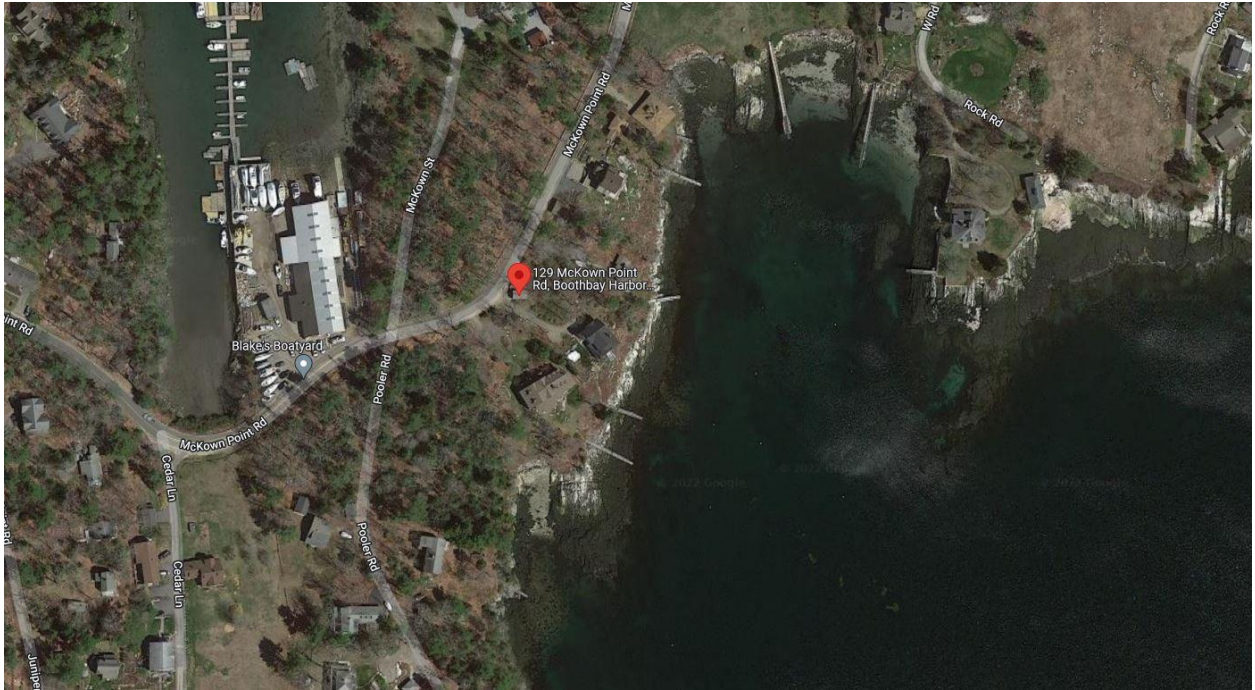
Sunday July 24

Breakfast Snacks	0800-0900
Boat Parade Assembly	0930
Boat Parade	1000
First Warning	1200
No Warning signal after	1530
Awards	1630

REGISTER [HERE](#) MORE INFORMATION [HERE](#)



Viper HQ at The Bowditch Cottage



Beach Cove Waterfront Inn..... Book [here](#)



PART II (Optional) THE DOWN EAST CRUISE

Monday: 0700- 0930 Ferry trailers and cars to St Georges.
1100 -1400 Sail to Christmas Cove 7 NM Lunch at Christmas Cove
Afternoon Options:
(1) Hang Out Christmas Cove and South Bristol.
(2) Sail Christmas Cove 21 One Designs or Vipers as guest of CCIA.
To indicate that you are racing in your Viper, please note that Sis require flying a pillow case with skull and crossbones.
(3) Powerboat trip up the Damariscotta River via Seal Cove.
Monday Night: Christmas Cove BnB or alternatively moor at East Boothbay

Tuesday: Departure Time Wind Dependent:

1000- 1500 **Down East Scorch to Port Clyde** 17 NM Spinaker Reach
Pause for safety check and Puffin watching at East Egg Rock.
Sail through Davis Strait into Port Clyde
Kurt Schleicher will meet us with ride to our cars and trailers.
Haul Out. De Rig and head home via Marblehead....or just keep going

Monday Route





Lunch @ Coveside Marine



CCIA Swimming pool. Toto, we are not at EYC anymore!



Damariscotta River



East Boothbay.....leave Vipers or Power boat here for those who want to return to Boothbay overnight



Tuesday Route





Eastern Egg Rock en route of SCORCH





Burnt Island looking towards David Strait

Marshall Point Light : Entering Port Clyde



Port Clyde

